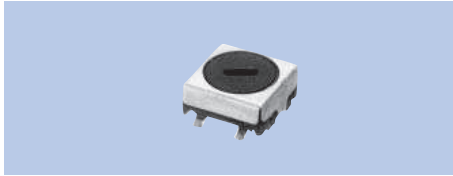


# Adjustable Type Coils K Type Series

Coils, Filters

## K5-S

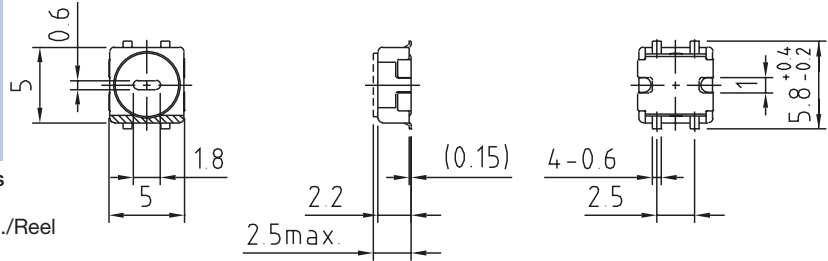


**Specifications**

- (1) 1~300μH (4) -
- (2) 0.1~20MHz (5) 40~70
- (3) F:±2%
- L:±4%

**Features**

- SMD
- 1000pcs./Reel



## K5-S2

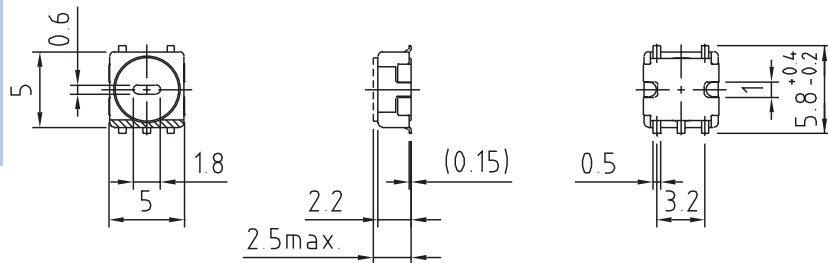


**Specifications**

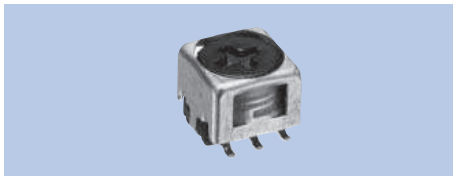
- (1) 1~300μH
- (2) 0.1~20MHz
- (3) F:±2%
- L:±4%
- (4) -
- (5) 40~70

**Features**

- SMD
- 1000pcs./Reel



## K5-N1

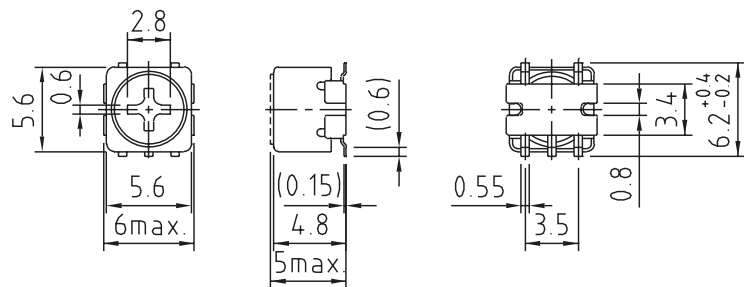


**Specifications**

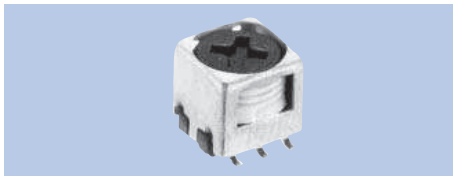
- (1) 1~1200μH
- (2) 0.1~20MHz
- (3) F:±2%
- L:±5%
- (4) 5~15000pF×2
- (5) 50~80

**Features**

- SMD
- 1000pcs./Reel



## K5-N

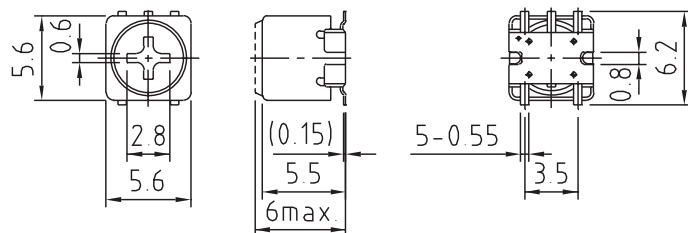


**Specifications**

- (1) 1~5900μH
- (2) 0.1~20MHz
- (3) F:±2%
- L:±5%
- (4) 5~15000pF×2
- (5) 50~100

**Features**

- SMD
- 1000pcs./Reel



- (1) Inductance
- (2) Operational frequency
- (3) Variable range of F & L
- (4) Internal capacitance
- (5) Unloaded Q