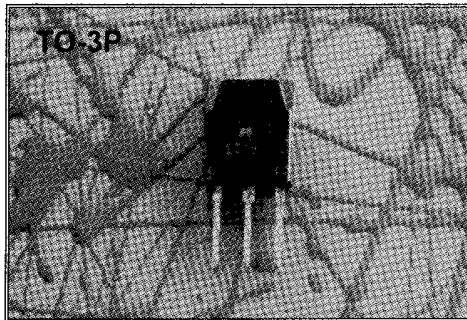
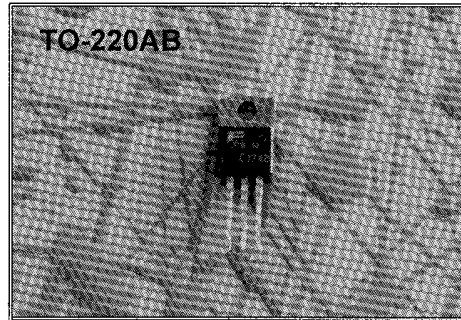


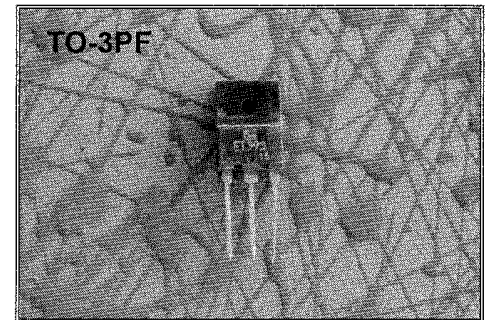
FUJI ELECTRIC SWITCHING TRANSISTORS



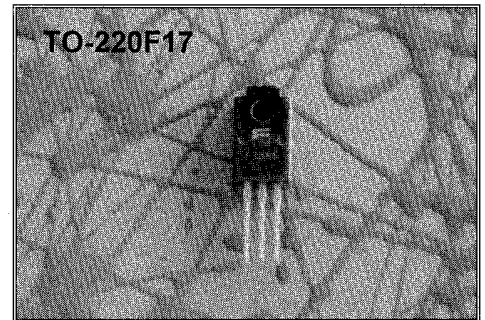
IC AMPS Max.	V _{CEO} V (sus)	P _c W	Device Type NPN
3	800	80	2SC3550
	180	80	2SD921
5	800	80	2SC3551
	1000*	80	ET383
6	700	80	2SC3505
	800	100	2SC4419
7	400	80	2SC2656
	800	80	2SC3030
8	450	80	ET190
10	100	80	2SD923
	100	80	ET378
	400	80	2SC2625
	400	80	2SC3318
	400	80	2SC4275
	500	80	ET206
12	450	100	ET191
-15	-40	100	2SB757**
15	40	100	2SD847
	200	100	2SC2944
	300	80	2SC2626
	400	80	2SC3320
	400	80	2SC4276
	400	80	2SC4750
	450	80	ET375
500	80	2SC4831R	
25	80	80	2SD1049
30	400	120	2SC4795-01



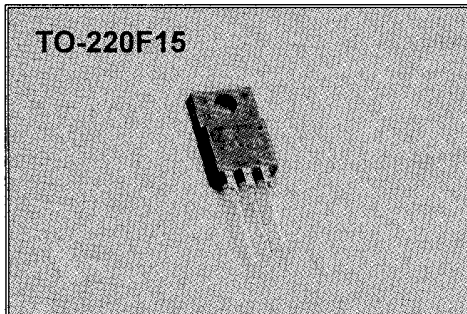
IC AMPS Max.	V _{CEO} V (sus)	P _c W	Device Type NPN
3	400	60	2SC2929
	800	40	2SC3549
4	50	25	2SD1157
	200	25	2SD834
	250	60	2SD1073
-5	-80	30	2SB862**
5	100	30	2SD1128
	180	60	2SD982
	200	60	2SC2767
	350	60	2SD1072
	400	40	2SC3723
	400	40	2SC4273
6	400	40	2SC2440
	400	40	2SC3317
	300	40	2SD1071
	350	40	2SD835
7	500	40	2SC3047
	80	40	2SD916
	80	50	2SC2438
8	80	60	2SD833
	400	40	2SC4622
	400	60	2SC4242-01
-10	-40	50	2SD1158
10	40	50	2SD1117
	50	50	2SD1118
	200	50	2SC2768
	400	40	2SC4274



IC AMPS Max.	V _{CEO} V (sus)	P _c W	Device Type NPN
3	800	80	2SC4603
	180	80	2SD2431
5	700	80	2SC2047R
	800	80	2SC4538
10	100	80	ET393
	400	80	ET405
	400	80	2SC4509
	400	80	ET400



IC AMPS Max.	V _{CEO} V (sus)	P _c W	Device Type NPN
3	700	40	2SD2234
	800	40	2SC3866
-5	-80	30	ET367**
5	80	30	2SD1740
	180	40	ET382
	400	30	2SC3822
	400	40	2SC3865
	400	40	2SC3821
	400	40	2SC4507
6	450	40	ET391
	350	40	ET385
7	500	40	ET403MR
	50	30	2SD1797
8	50	40	ET366
	80	25	2SD1726
10	180	40	2SC4383
	300	40	ET365
-10	-40	40	2SB1532**
10	400	40	2SC4508

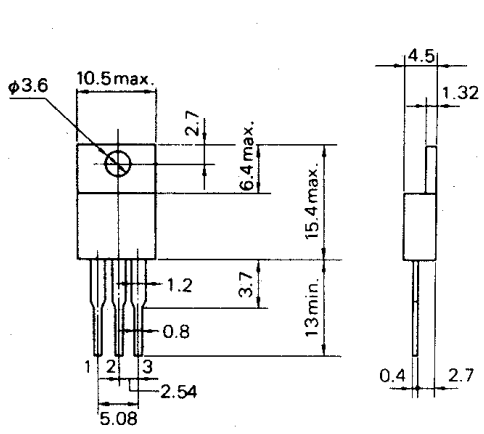


IC AMPS Max.	V _{CEO} V (sus)	P _c W	Device Type NPN
5	500	40	2SC4786
7	400	40	2SC4977

* V_{CEX} (sus)

** PNP Transistor

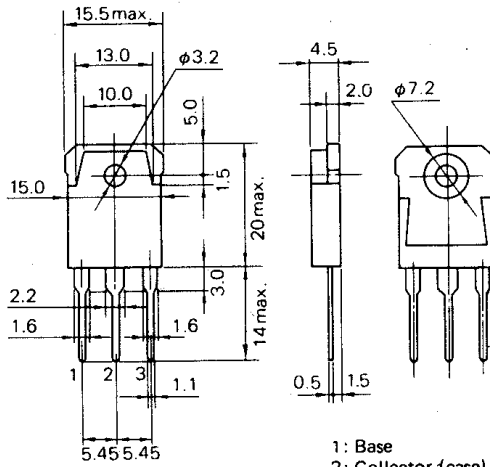
TO-220AB



- 1: Base
- 2: Collector (case)
- 3: Emitter

Mounting torque: 3–5kg·cm

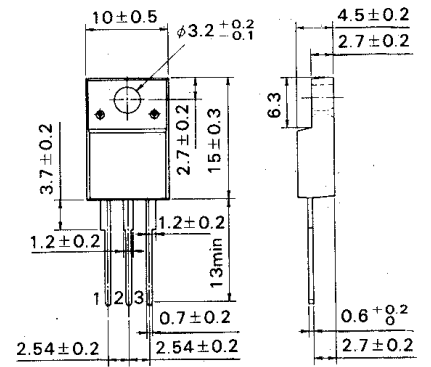
TO-3P



- 1: Base
- 2: Collector (case)
- 3: Emitter

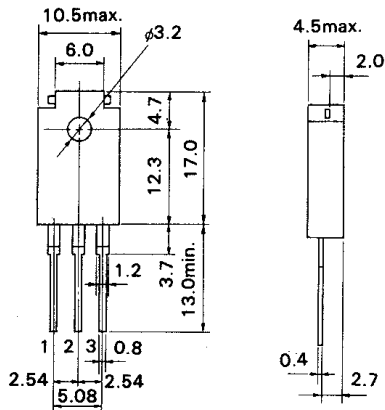
Mounting torque: 4–6kg·cm

TO-220F15 (Full molded package)



- 1: Base
- 2: Collector
- 3: Emitter

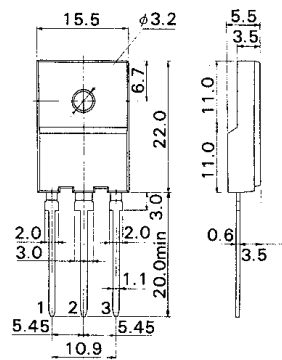
TO-220F17 (Full molded package)



- 1: Base
- 2: Collector
- 3: Emitter

Mounting torque: 3-5kg·cm

TO-3PF (Full molded package)



- 1: Base
- 2: Collector
- 3: Emitter

Mounting torque: 4–6kg·cm